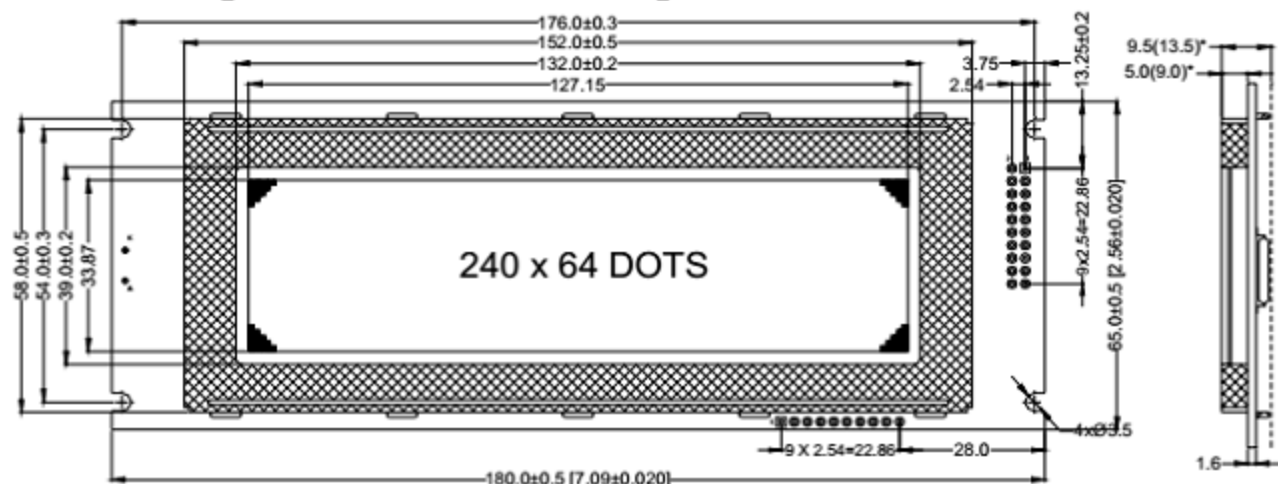
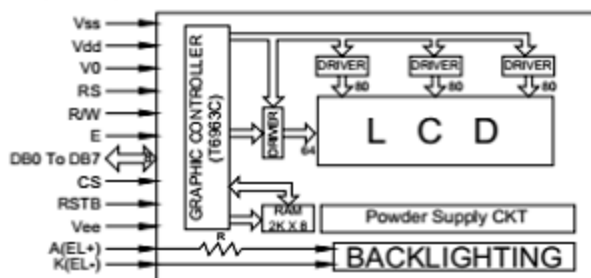


### LG240643 [240 x 64, 1/64 MUX]

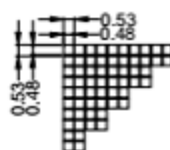
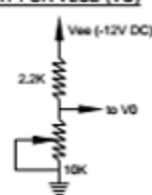
DIMENSION IN MM



#### BLOCK DIAGRAM



#### CKT FOR VLCD (V0)



[ \* ] DIMENSIONS FOR LED BACKLIGHT VERSION

#### TABULATED DATA

MODEL	DISPLAY FORMAT DOT x DOT	DRIVING DUTY	DOT SIZE W x H	DOT PITCH W x H	VIEWING AREA W x H	PCB SIZE W x H
LG240643	240 x 64	1/64	0.48 x 0.48	0.53 x 0.53	132.0 x 39.0	180.0 x 65.0

#### ELECTRICAL DATA (Ta = 25°C, Vdd = +5V ± 0.25V)

ITEM	SYMBOL	TEST CONDITION	STANDARD VALUES			UNITS
			MIN.	TYP.	MAX.	
Input High Voltage	V <sub>IH</sub>	-	2.4	-	V <sub>dd</sub>	V
Input Low Voltage	V <sub>IL</sub>	-	V <sub>SS</sub>	-	0.7	V
Output High Voltage	V <sub>OH</sub>	I <sub>OH</sub> = 0.6mA	V <sub>dd</sub> -0.4	-	V <sub>dd</sub>	V
Output Low Voltage	V <sub>OL</sub>	I <sub>OL</sub> = 1.6mA	-	-	0.4	V
Supply Current	I <sub>dd</sub>	V <sub>dd</sub> = 5.0V	-	14.0	20.0	mA
Operating Voltage for LCD	V <sub>dd</sub> -V <sub>out</sub>	Ta = 0°C	-5.2	-6.2	-12.0	V
		Ta = 25°C	-4.8	-5.8	-11.8	V
LED Backlight Current	I <sub>LED</sub>	V <sub>dd</sub> = 5.0V	120	140	180	mA

#### PIN DETAILS

PIN No.	DESCRIPTION	PIN No.	DESCRIPTION	PIN No.	DESCRIPTION
1 & 2	FG & GND	6	R <sub>D</sub>	10	R <sub>ST</sub>
3	V <sub>cc</sub>	7	C <sub>E</sub>	11 to 18	DB0 to DB7
4	V <sub>o</sub>	8	C/ <sub>D</sub>	19	FS
5	W <sub>R</sub>	9	NC	20	LED BLA

#### MAX. RATINGS

ITEM	MAX.
Top	-10 to +65°C
T <sub>st</sub>	-20 to +70°C
V <sub>dd</sub>	+5Volts
RH %	90%